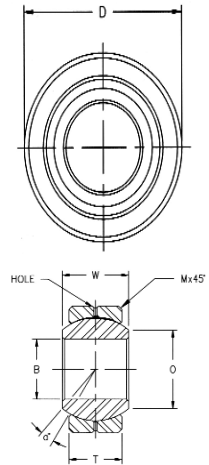


High-Strength-Alloy Rod Ends — Male

The high-strength series features a heat-treated chrome moly body, a 52100-bearing-steel ball and a Teflon/Kevlar® self-lubricating and self-sealing race.

Part #		Dimensions in inches												
Right hand	Left hand	B +.0015 -.0005	W +.000 -.005	T Ref.	A ±.015	D ±.010	Ball dia. ref.	C +.062 -.031	Thread UNF-2B	a° misalign. angle	Ult. radial static load cap. (lbs.)	Approx. brg. wt. (lbs.)		
XMR-3	XML-3	.1900	.312	.250	1.250	.625	.437	.750	10-32	13	2,851	.028		
XMR-4	XML-4	.2500	.375	.281	1.562	.750	.500	1.000	1/4-28	16	5,260	.043		
XMR-5	XML-5	.3125	.437	.344	1.875	.875	.625	1.250	5/16-24	14	7,125	.072		
XMR-6	XML-6	.3750	.500	.406	1.938	1.000	.719	1.250	3/8-24	12	8,939	.112		
XMR-7	XML-7	.4375	.562	.437	2.125	1.125	.812	1.375	7/16-20	14	9,653	.160		
XMR-8	XML-8	.5000	.625	.500	2.438	1.312	.937	1.500	1/2-20	13	15,500	.249		
XMR-10	XML-10	.6250	.750	.562	2.625	1.500	1.125	1.625	5/8-18	16	17,148	.382		
XMR-12	XML-12	.7500	.875	.687	2.875	1.750	1.312	1.750	3/4-16	14	27,021	.602		



High-Strength-Alloy Rod Ends — Female

The high-strength series features a heat-treated chrome moly body, a 52100-bearing-steel ball and a Teflon/Kevlar® self-lubricating and self-sealing race.

Part #		Dimensions in inches												
Right hand	Left hand	B +.0015 -.0005	W +.000 -.005	T Ref.	A ±.015	D ±.010	E ±.010	F ±.010	Ball dia. ref.	C +.062 -.031	Thread UNF-2B	a° misalign. angle	Ult. radial static load cap. (Lbs.)	Approx. brg. wt. (lbs.)
XFR-3	XFL-3	.1900	.312	.250	1.062	.625	.406	.312	.437	.750	10-32	13	2,851	.028
XFR-4	XFL-4	.2500	.375	.281	1.312	.750	.469	.375	.500	1.000	1/4-28	16	5,260	.043
XFR-5	XFL-5	.3125	.437	.344	1.375	.875	.500	.437	.625	1.250	5/16-24	14	7,125	.072
XFR-6	XFL-6	.3750	.500	.406	1.625	1.000	.687	.562	.719	1.250	3/8-24	12	8,939	.112
XFR-7	XFL-7	.4375	.562	.437	1.812	1.125	.750	.625	.812	1.375	7/16-20	14	9,653	.160
XFR-8	XFL-8	.5000	.625	.500	2.125	1.312	.875	.750	.937	1.500	1/2-20	13	15,500	.249
XFR-10	XFL-10	.6250	.750	.562	2.500	1.500	1.000	.875	1.125	1.625	5/8-18	16	17,148	.382
XFR-12	XFL-12	.7500	.875	.687	2.875	1.750	1.125	1.000	1.312	1.750	3/4-16	14	27,021	.602

High-Strength Jam Nuts

Part #	Nut size	Orientation
RPW-1400L	1/4"	Left
RPW-1400R	1/4"	Right
RPW-5160L	5/16"	Left
RPW-5160R	5/16"	Right
RPW-3800L	3/8"	Left
RPW-3800R	3/8"	Right
RPW-7160L	7/16"	Left
RPW-7160R	7/16"	Right
RPW-1200L	1/2"	Left
RPW-1200R	1/2"	Right
RPW-5800L	5/8"	Left
RPW-5800R	5/8"	Right
RPW-3400L	3/4"	Left
RPW-3400R	3/4"	Right

Specs: Economy-Plus Series

Ball	Body
<ul style="list-style-type: none"> • 52100 bearing steel; • heat treated; • hard chrome-plated; and • precision ground on all surfaces. 	<ul style="list-style-type: none"> • alloy steel; and • protective-coated for corrosion resistance.

Economy-Plus Series

Part #		Dimensions in inches												
Male														
Right hand	Left hand	B +.0015 -.0005	W ±.005	T ref.	A ±.015	D ±.010	Ball dia. ref.	C +.062 -.031	Thread UNF-3A	a° misalign. angle	Ult. radial static load cap. (lbs.)	Approx. brg. wt. (lbs.)		
CMR-3	CML-3	.1900	.312	.234	1.250	.625	.437	.750	10-32	20	2,074	.03		
CMR-4	CML-4	.2500	.375	.250	1.562	.750	.500	1.000	1/4-28	27	3,820	.04		
CMR-5	CML-5	.3125	.437	.312	1.875	.875	.625	1.250	5/16-24	22	5,110	.07		
CMR-5-6	CML-5-6	.3125	.437	.312	1.938	1.000	.719	1.250	3/8-24	22	7,605	.10		
CMR-6	CML-6	.3750	.500	.359	1.938	1.000	.719	1.250	3/8-24	22	7,605	.11		
CMR-7	CML-7	.4375	.562	.406	2.125	1.125	.812	1.375	7/16-20	21	9,122	.15		
CMR-8	CML-8	.5000	.625	.453	2.438	1.312	.937	1.500	1/2-20	20	12,224	.24		
CMR-10	CML-10	.6250	.750	.484	2.625	1.500	1.125	1.625	5/8-18	26	13,540	.36		
CMR-12	CML-12	.7500	.875	.593	2.875	1.750	1.312	1.750	3/4-16	24	18,810	.57		

Part #/price		Dimensions in inches												
Female														
Right hand	Left hand	B +.0015 -.0005	W ±.005	T ref.	A ±.015	D ±.010	E ±.010	F ±.010	Ball dia. ref.	C +.062 -.031	Thread UNF-3A	a° misalign. angle	Ult. radial static load cap. (lbs.)	Approx. brg. wt. (lbs.)
CFR-3	CFL-3	.1900	.312	.234	1.062	.625	.406	.312	.437	.500	10-32	20	2,702	.04
CFR-4	CFL-4	.2500	.375	.250	1.312	.750	.469	.375	.500	.687	1/4-28	27	4,397	.05
CFR-5	CFL-5	.3125	.437	.312	1.375	.875	.500	.437	.625	.687	5/16-24	22	5,110	.08
CFR-6	CFL-6	.3750	.500	.359	1.625	1.000	.687	.562	.719	.812	3/8-24	22	7,605	.13
CFR-7	CFL-7	.4375	.562	.406	1.812	1.125	.750	.625	.812	.937	7/16-20	21	9,122	.18
CFR-8	CFL-8	.5000	.625	.453	2.125	1.312	.875	.750	.937	1.062	1/2-20	20	12,224	.29
CFR-10	CFL-10	.6250	.750	.484	2.500	1.500	1.000	.875	1.125	1.375	5/8-18	26	13,540	.43
CFR-12	CFL-12	.7500	.875	.593	2.875	1.750	1.125	1.000	1.312	1.562	3/4-16	24	18,810	.65